

Definition

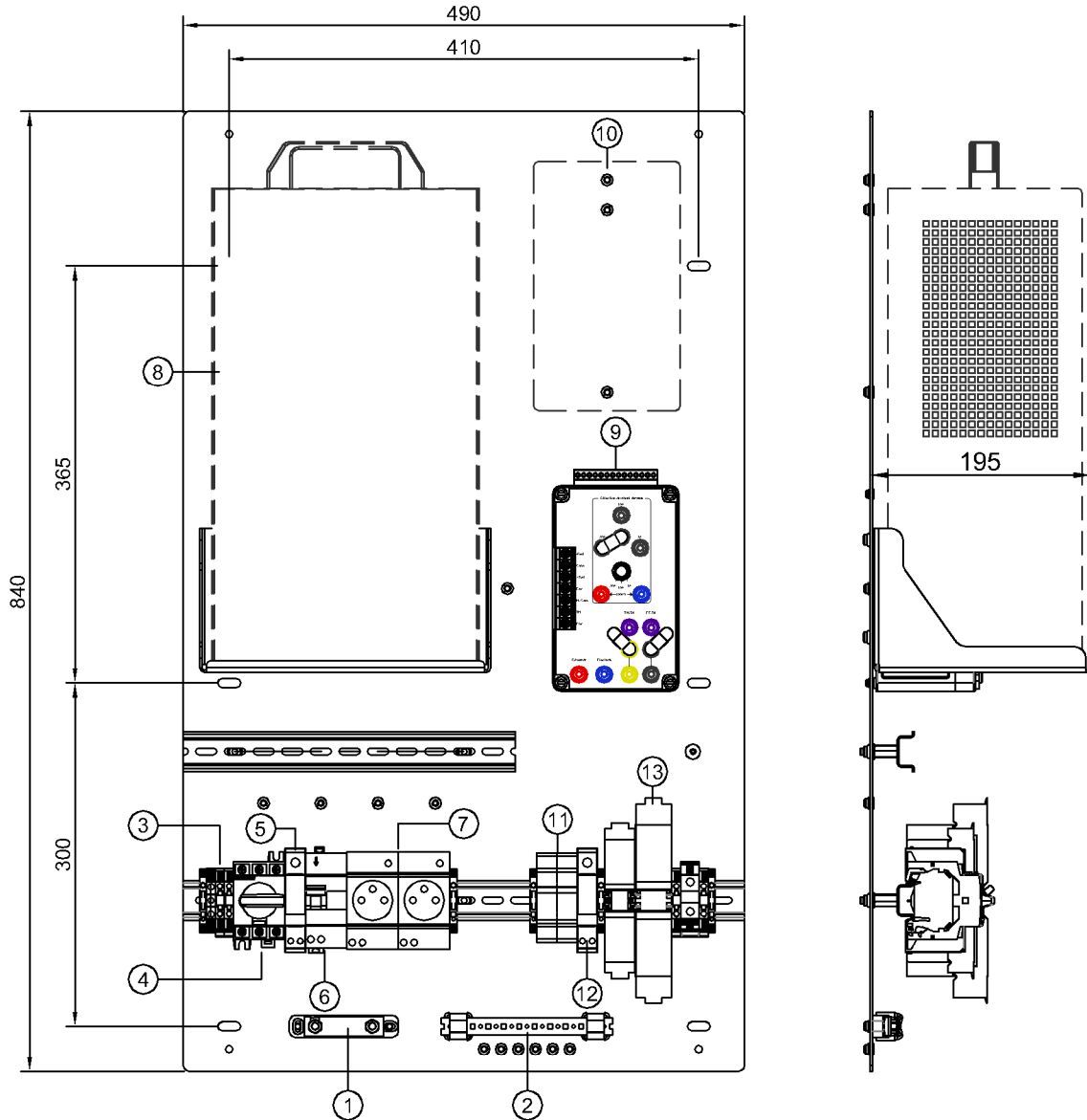
Rectifier station plate V3

Reference

02-102-00

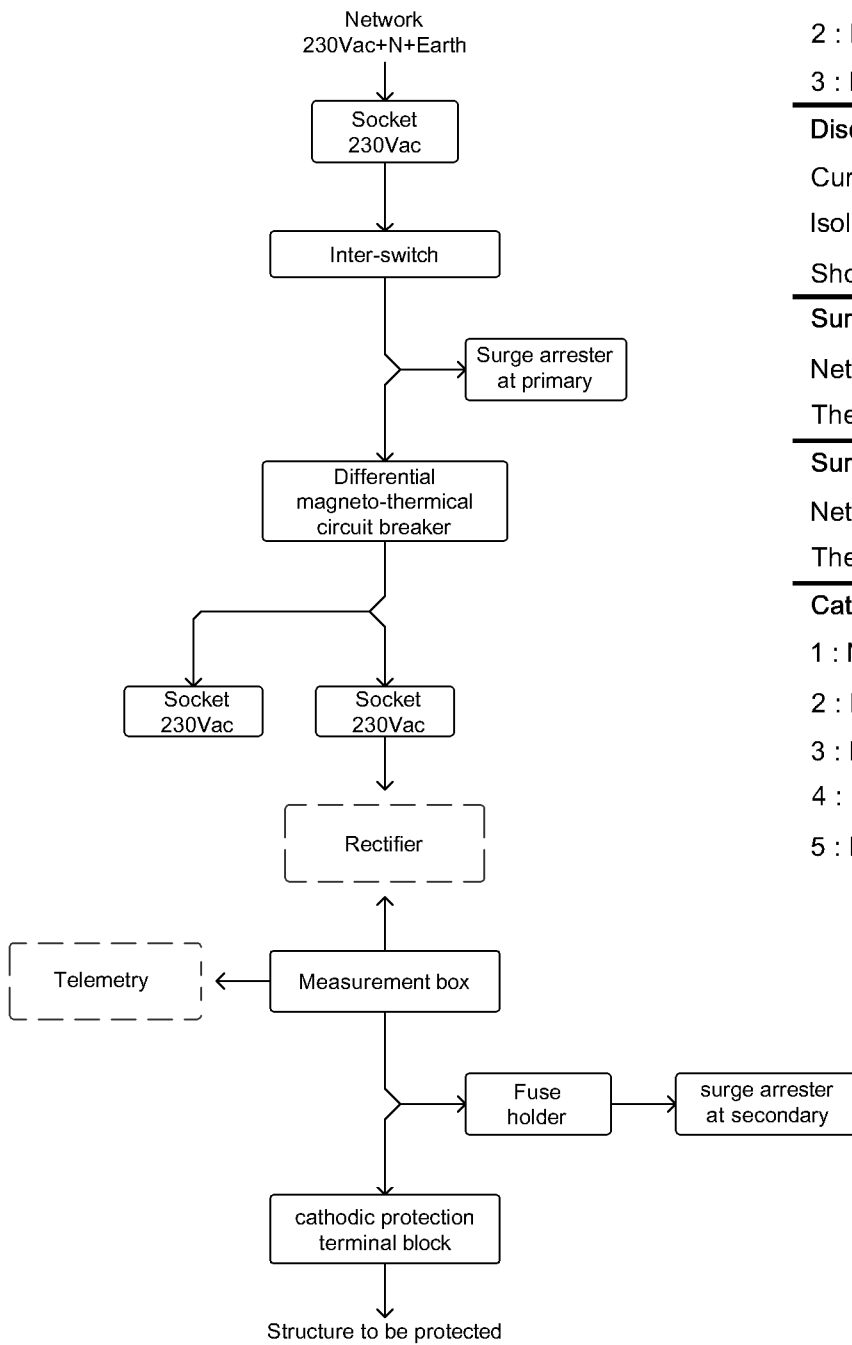
Implantation

Implantation in a cabinet of format BC400 in PVC or Aluminum



| Index | Object / Description |
|-------|---|
| 1 | Electric earth cut-off bar |
| 2 | Electric earth bar : Earth and mass collection |
| 3 | Network terminal block 6mm ² max |
| 4 | Disconnector switch |
| 5 | Surge arrester type 2 - 230Vac supply |
| 6 | Magneto differential circuit breaker |
| 7 | socket 230Vac |
| 8 | Rectifier location |
| 9 | Measurement box for reading information and connection to telemetry |
| 10 | Telemetry location |
| 11 | Circuit breaker 10x38 20AGg for surge arrester at secondary |
| 12 | Surge arrester type 2 at secondary |
| 13 | cathodic protection terminal block |

Synoptic



Network terminal block

- 1 : Pe - 6mm²
- 2 : Neutral - 6mm²
- 3 : Phase - 6mm²

Disconnecter switch

- Current max : 32A
- Isolation voltage : 800Vac
- Shock : 8kV

Surge arrester at primary

- Network : 230Vac
- The discharge current : 40kA

Surge arrester at secondary

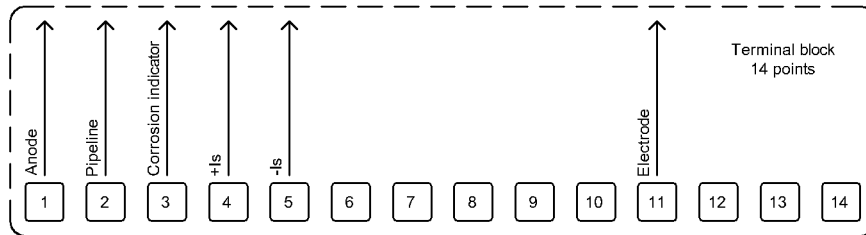
- Network : 100Vdc
- The discharge current : 40kA

Cathodic protection terminal block

- 1 : Negative - 35mm²
- 2 : Positive - 35mm²
- 3 : Metallic corrosion indicator - 6mm²
- 4 : Measure negative - 35mm²
- 5 : Electrode - 6mm²

Measurement box

| Calibration of the measuring shunt (scale 100mV) | | | | | | | References |
|---|-------|----|----|----|-----|-----|------------|
| 100mA | 500mA | 1A | 2A | 5A | 10A | 20A | |
| ● | ● | ● | | | | | 13-104-00 |
| | | | ● | ● | ● | | 13-106-00 |
| | | ● | | | ● | ● | 13-103-00 |



Terminal block 14 points connection to telemetry

U-Clip for selecting the measuring shunt for the power circuit

Connection terminal block for the structure to be protected and the rectifier

U-Clip for cutting the corrosion indicator potential information to the telemetry

